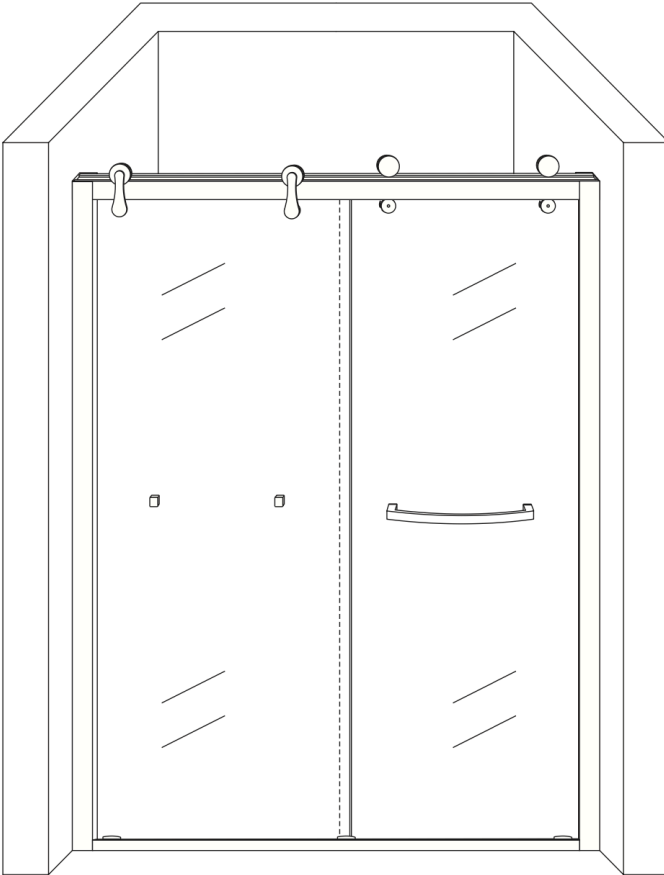


XtremeAIR®

HOME IMPROVEMENT



B-605 SC / BL-605 SB

60 in x 62 in

60 in x 76 in

INSTALLATION & USER MANUAL

CRYSTAL

XtremeAIRusa.com

RoHS  ISO9001:2000

M1.5.4

Need Assistance?

At XtremeAIR USA, we're committed to ensuring your satisfaction and providing you with exceptional support. If you have any questions or need assistance during installation or use, please don't hesitate to contact our customer support team.



xtremeairusa.com



WARRANTIES & SUPPORT
Support@XtremeAIRusa.com



SALES & DEALERS
Sales@XtremeAIRusa.com



(714) 554 9000



Distributed by MM Home Improvement
16142 S Harbor Blvd Fountain Valley CA



XtremeAIR.

TABLE OF CONTENTS

TABLE OF CONTENTS	PAGE 1
IMPORTANT SAFETY INSTRUCTIONS	PAGE 2
PARTS DIAGRAM	PAGE 3
PREPARATION	PAGE 4
INSTALLATION	PAGE 5
	6
	7
PRODUCT MAINTENANCE	PAGE 8
PRODUCT WARRANTY & INFO	PAGE 9

IMPORTANT SAFETY INSTRUCTIONS



LEGAL DISCLAIMER:

XtremeAir® reserves the right to alter, modify, or redesign products at any time without prior notice. For the most up-to-date technical drawings, manuals, warranty information, or other details, please refer to your model's page on XtremeAirUSA.com.

WARNING:

Risk of serious injury. Glass damage prior to installation can result in shattering; inspect the glass and all parts for damage before installation. Improper installation may also cause glass to shatter, so carefully follow all installation instructions. Do not cut tempered glass as it will shatter if cut. Shower door and side panels are prone to shattering if damaged; regularly inspect all parts for damage, missing, or loose components. Always wear safety glasses when moving, installing, cutting, or drilling glass panels.

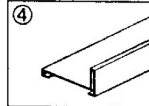
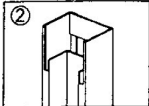
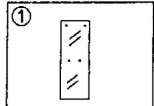
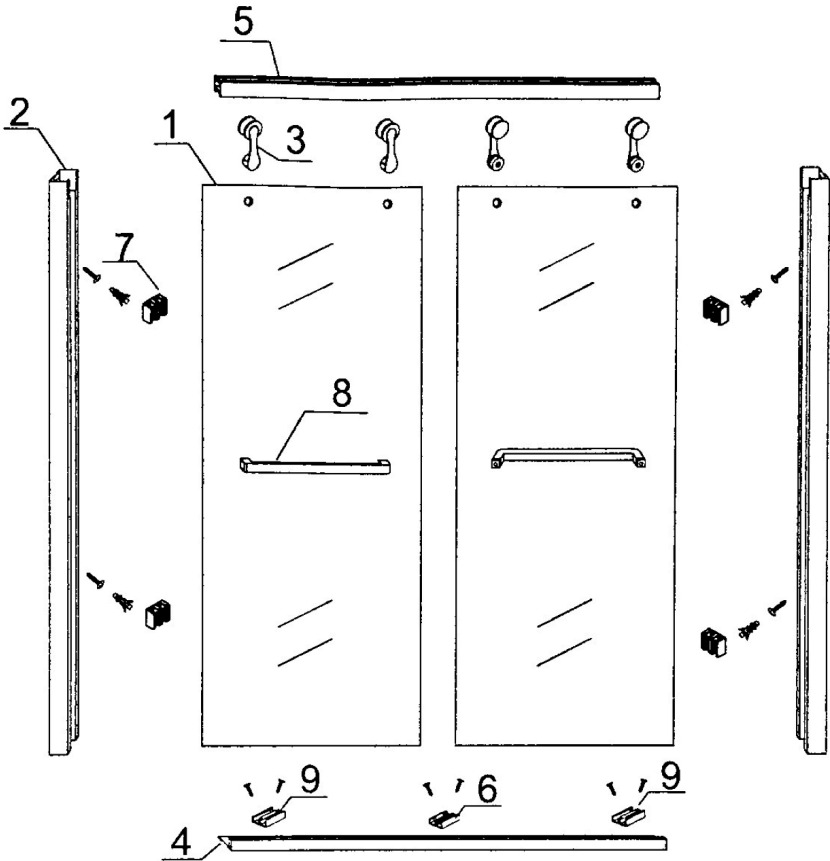
IMPORTANT:

Avoid touching the edges of tempered glass with tools or hard objects, and never place unframed tempered glass directly on the floor or hard surfaces. Leave this manual with the end user for future reference. PLEASE WEAR GLOVES FOR INSTALLATION

NOTICE:

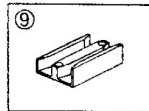
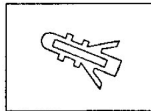
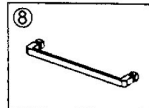
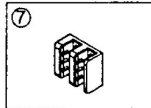
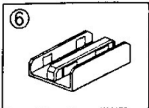
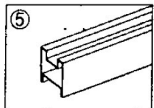
The warranty is void if the product is modified or altered in any way not expressly permitted in the Installation and Care Guide. Read and follow all instructions carefully to ensure safety and proper installation.

PARTS DIAGRAM



Parts

- 1. Glass Panel (x2)
- 2. Wall Profile (x2)
- 3. Wheel Assembly (x4)
- 4. Bottom Profile
- 5. Top Rail
- 6. Middle Bottom Bracket
- 7. Wall Brackets (x4)
- 8. Handle Bar (2)
- 9. Side Bottom Brackets (x2)



Hardware

- 4x14 screws (x6)
- 4x30 screws (x4)
- Wall anchors (x4)

PREPARATION

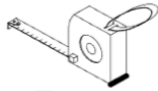
WARNING: Risk of serious injury. Damage to the product prior to installation can result in failure or hazards; inspect all components for damage before installation. Improper installation may compromise the product's functionality or safety, so carefully follow all installation instructions. Do not modify or alter the product in any way not expressly permitted, as it may result in malfunction or void the warranty. Always wear safety glasses when handling, installing, or working near sharp or potentially hazardous components. **IMPORTANT:** Avoid using tools or hard objects near delicate edges or surfaces of XtremeAir products to prevent damage. Ensure the installation area is clean and free of obstructions. Leave this manual with the end user for future reference. **NOTICE:** The warranty is void if the product is modified, altered, or installed incorrectly, as outlined in the Installation and Care Guide. Read and follow all instructions carefully to ensure safe and proper installation.

PROFESSIONAL INSTALLATION IS RECOMMENDED

PLEASE HAVE THE TOOLS BELOW READY FOR INSTALLATION



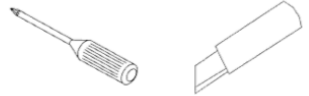
Level



Tape Measure



Pencil



Phillips Screwdriver

Razor Knife



Drill bit
($\text{\O} = 5/16''$)
(8mm)



Drill bit
($\text{\O} = 1/8''$)
(3mm)



Power Drill



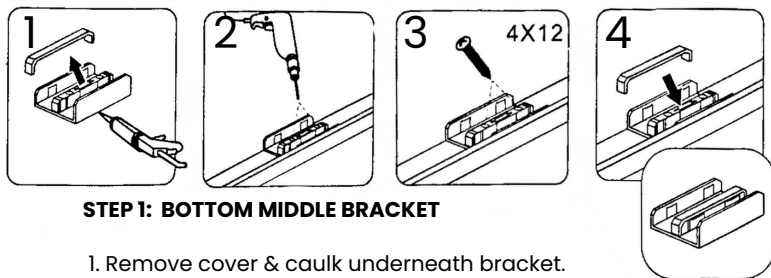
Hammer



Caulk

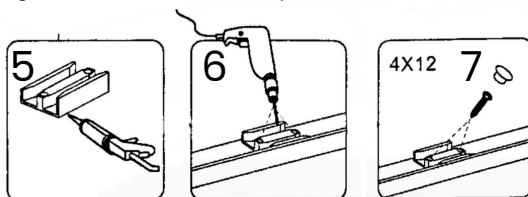
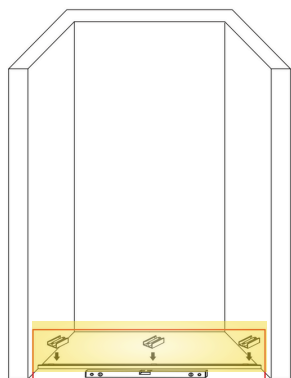
NOTE: Unpack your unit carefully and inspect it. Lay it out and identify all parts using the detailed diagram and packing list in this manual as a reference. Before discarding the carton, check for small hardware bags that may have fallen to the bottom of the box. The shipping boxes may contain extra parts not used in your model configuration.

NOTE: Retain these installation instructions for future reference



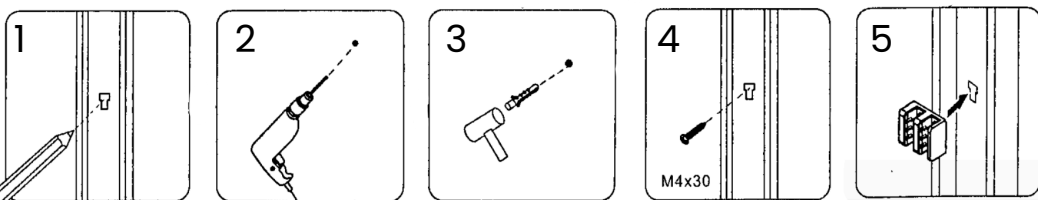
STEP 1: BOTTOM MIDDLE BRACKET

1. Remove cover & caulk underneath bracket.
2. Drill Pilot Holes
- 3 & 4. Secure Bracket: Tighten screws (4x12) and place cover back on.



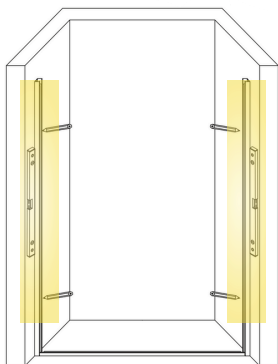
Step 1.5: BOTTOM SIDE BRACKETS

5. Caulk underneath bracket
6. Drill Pilot Holes
7. Secure Bracket: Tighten screws (4x12) to fix the bracket, place cover back on.

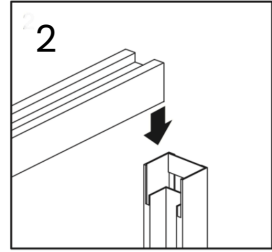
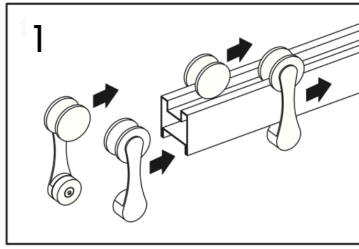
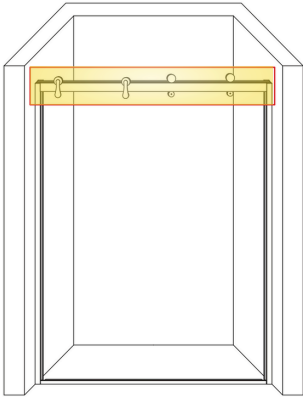


STEP 2: SIDE PROFILES

1. Mark the Placement:
 - Position the bracket on the surface and mark the holes for drilling.
2. Drill the Holes:
 - Use a drill to create pilot holes at the marked positions.
3. Insert Wall Plugs:
 - Push wall plugs into the drilled holes to ensure a secure fit.
4. Secure the Bracket Mount:
 - Screw the bracket mount in place
5. Attach the Bracket :
 - Secure the bracket onto the assembly



INSTALLATION



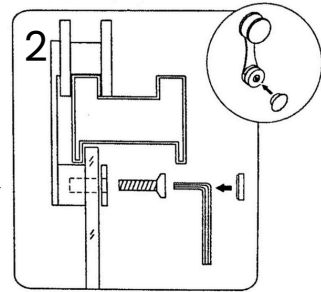
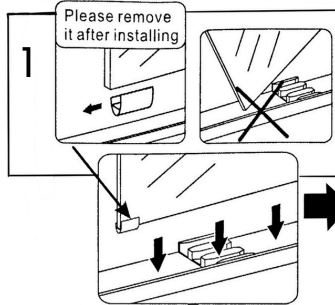
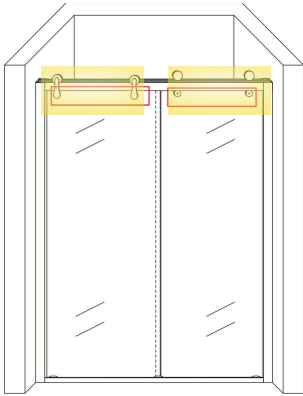
STEP 3: ROLLERS

1. Attach Rollers:

- Insert rollers into the rail track as shown.
- Slide rollers along the track until they are positioned.

2. Position the Rail:

- Place the rail onto the previously installed brackets or slots. Ensure the rail is securely seated into the brackets.



STEP 4: TOP PROFILE

1. Installing The Glass

- While keeping the protectors on the glass, align the glass to the bottom brackets, resting the wheels on the top railing

2. Secure Wheel Assembly to glass door:

- Position the wheel assembly appropriately on top of the top rail and insert the screws through the fasteners. Tighten evenly

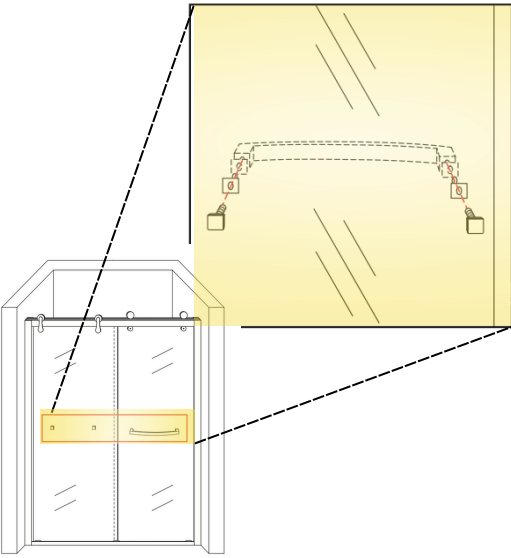
STEP 5: HANDLES

1. Position Handle:

Place the soft mounting pieces between the handle and the glass, aligning with the pre-drilled holes.

2. Secure Screws:

Attach the fasteners from the inside and tighten screws evenly, ensuring the soft mounts are in place.



STEP 6: SEALING

1. Apply Caulking to Joints:

- Run a continuous bead of caulking along the edges where the glass meets the frame, the bottom track, and along the sidewalls as shown.

2. Seal Bottom Track:

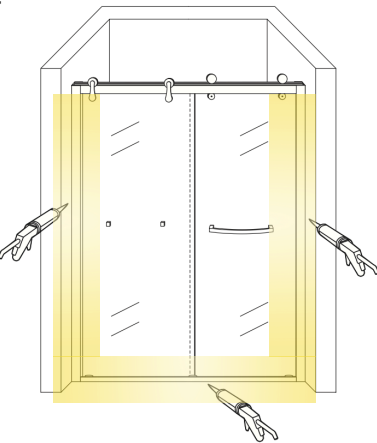
- Ensure the caulking is applied along the full length of the bottom track to create a watertight seal.

3. Smooth Caulking:

- Use a caulking tool or your finger to smooth the caulking for a clean and professional finish.

4. Cure:

- Let the caulking cure. Do Not expose to water for 24 hours.



PRODUCT MAINTENANCE

Product Maintenance for XtremeAIR Shower Systems

Acrylic Bases and Backwalls:

To ensure the long-lasting durability of your acrylic backwalls:

- Wipe them clean after each use with a soft cloth.
- Use non-abrasive sprays or cream-based cleaners for cleaning.
- Avoid using aerosol spray cleaners, abrasive cleansers, metal brushes, or scrapers, as these can scratch or dull the surface.

Glass Panels:

To maintain the pristine condition of your glass shower doors:

- Wipe the glass after each use with a soft cloth or squeegee to prevent soap buildup and water spots.
- Hard water left to dry can etch the surface over time, so rinse and dry promptly.
- Never use abrasive cleaners, scouring agents, bristle brushes, or abrasive sponges that may scratch or damage the glass.

Metal Hardware:

To preserve the finish on your metal hardware:

- Wipe the metal parts with a soft cloth after each use.
- Avoid abrasive cleaners or products containing ammonia, bleach, or acid. If accidentally applied, rinse immediately to prevent damage like peeling or corrosion.
- For polished finishes, rinse thoroughly and dry with a soft cloth after cleaning.
- Clean stainless steel parts at least once a week, using stainless steel cleaner or polish. Always work with the grain when cleaning or polishing.
- Never use abrasive sponges, steel wool, or wire brushes, as they may permanently scratch the surface.

Regular Inspection:

- Regularly inspect the glass and hardware for signs of misalignment or wear to ensure the door operates smoothly and safely.

By following these maintenance steps, your XtremeAir shower system will remain in excellent condition for years to come.

WARRANTY INFORMATION

For the most up-to-date warranty information on XtremeAIR Home Improvement Shower Doors, please visit the official XtremeAIR website.



xtremeairusa.com



ADDITIONAL PRODUCT INFORMATION

BL-605 & B-605

Glass Thickness:

Premium 3/8" (10 mm) thick clear tempered glass

Materials:

Premium-grade 304 stainless steel with *ENDURACLEAN*

ENDURACLEAN: Stainless steel construction hardware will not rust, chip or scratch off. Shower doors are easy to clean, and easy maintenance will preserve the finishes

Hardware:

Large solid stainless steel rollers- create a smooth, quiet and effortless slide

Dimensions:

56" to 60" adjustable width x 62" height. Door walk- in width: 22" - 26"